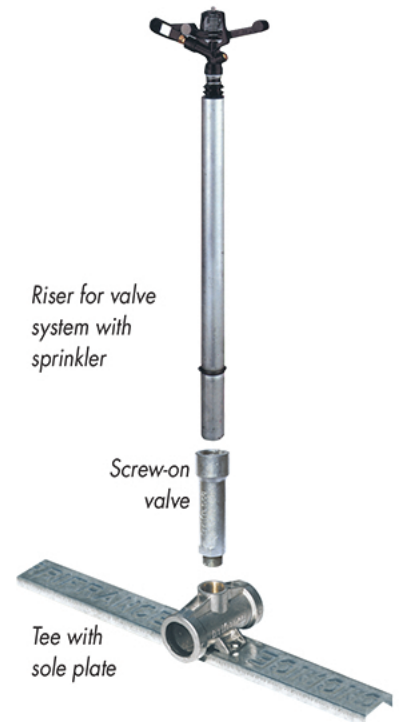


SOLID SET SYSTEMS



Rainfall quality

The plot is grid early in the season with pipes \varnothing 50. Depending on use, pipes are made of aluminum or polyethylene.

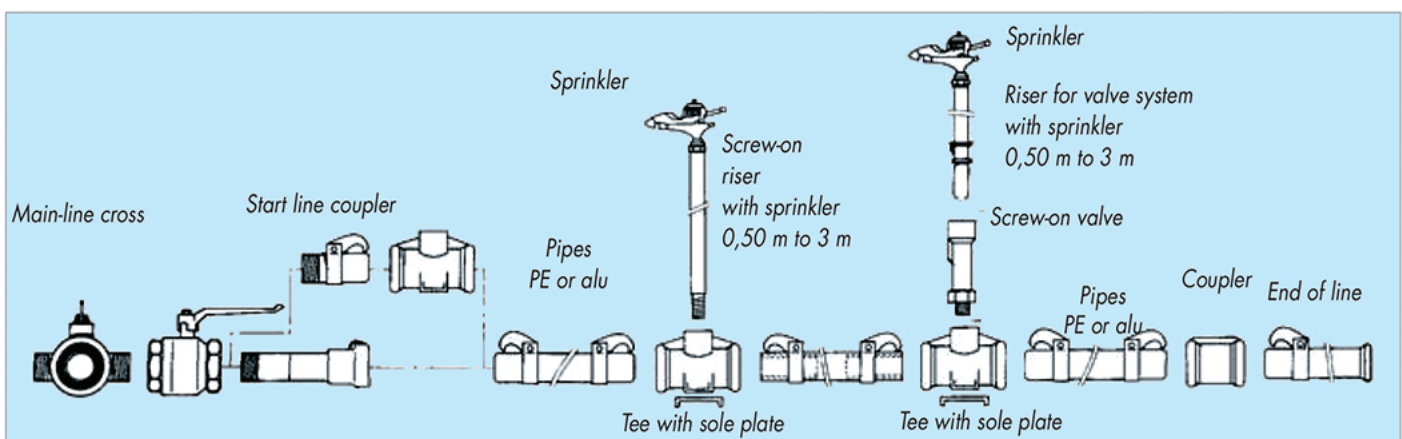
The most common locations are the 18 x 18 or 18 x 24 in windy areas.

At each position is a sprinkler : we count about 23 sprinklers per hectare.

Solid set system is easily adapted to solutions with semi-automatic management:

-Change position at night for example - or with fully automatic management : line by line or block by block.

The frequency of the system run is planned every 6 to 8 hours for an average intake of 20 to 25 mm.



The optimal solution

ALUMINUM ø 50 POLYETHYLENE ø 50 - ø 63



Easy and reliable technique

The sprinkler: robust, reliable in operations, a single jet for a better hold against wind and rainfall more regular at the use in very low pressures.

Riser : length 50 cm and 2.20 m, removable media of the sprinkler. Extruded aluminum, each rise (2.20 meters) weighs less than 1 kg

The riser starts (or can be removed) instantly in the ball gate. A ring provides blockage.

Ball gate: made of cast aluminum and allows changes in position

without stopping the group. A special gate, crimped within the Tee, seals at the removal of the riser.

A stabilizer foot (400 mm or 800 mm) maintains the stability of the whole.



Start line coupler



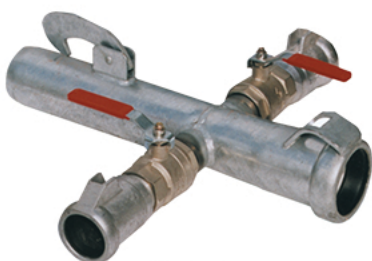
Coupler



Tee in line



Main-line tee



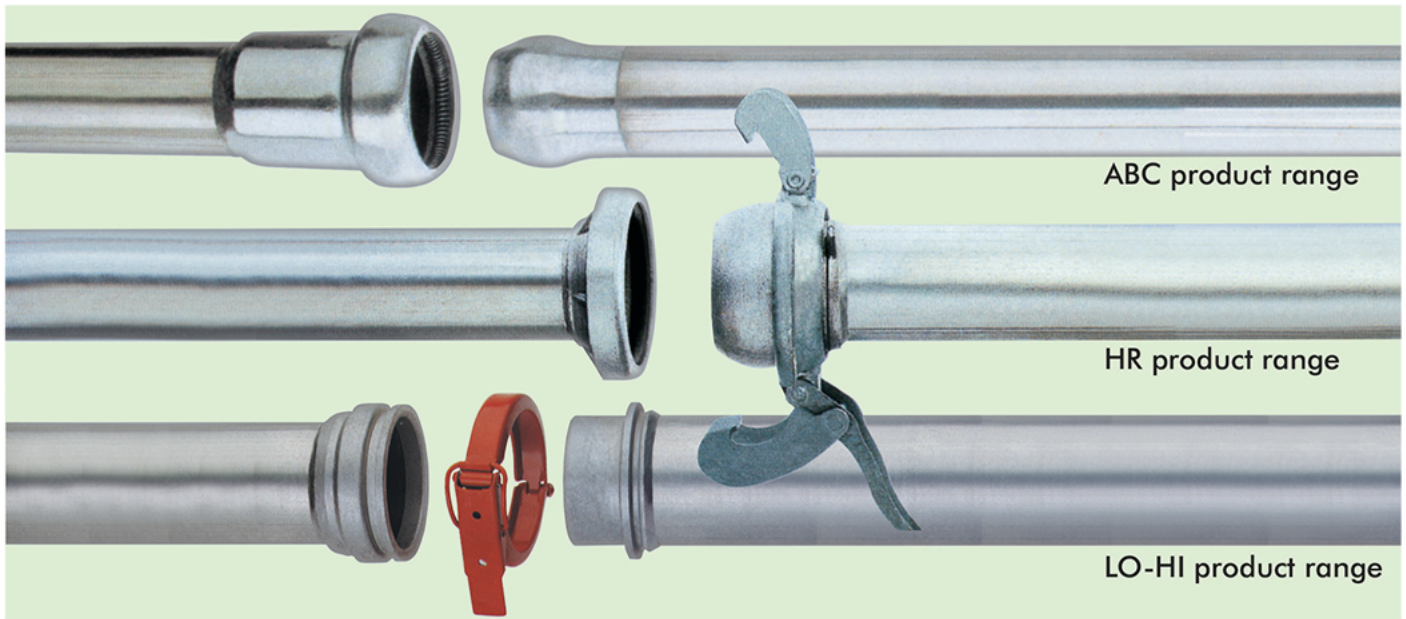
Main-line cross

Key benefits of Solid set system

- Low hourly rainfall for irrigation quality on all soil types.
- Adaptable to all surfaces and all forms of plots.
- Low operating pressure: economy.
- Equipment - simple and proven, reliable system.
- Lightweight and ease of implementation and change of position.
- Easy watering management thanks to the length of the positions and constant timing (6-10 h).
- Watering with no problem.
- Avoid errors in dosis.
- A system in which the distribution is the least disturbed by the wind. .
- Compatibility of solid set parts aluminum and polyethylene.

Galvanized products available on demand,
contact Irrifrance : 04 67 25 79 79

PIPES



The water tight coupler ABC

MOVABLE PIPES INTENDED FOR MOBILE INSTALLATIONS

ABC Pipe use allows a quick assembling. Hydraulic locking with a galvanized spring. Male and Female couplers are made of pressed, hot galvanized steel. Possibility to obtain a 22° angle at all levels between two couplers. The water tightness is guaranteed by a double lip hydraulic seam as soon as pressure is on. The direction of water flow in the joining is Female-Male. It exists for this type of couplers a complete range of pressed hot galvanized steel accessories (Tee in line, 45° and 90° Elbows, Tee, Cross, End of line) Tube conformable at standards NF A50801 et A50802. Pipes and accessories tested et CEMAGREF.



The water tight coupler HR

MOVABLE PIPES GUARANTEEING A PERFECT WATER TIGHTNESS

Couplers used for pumping station, suction part and stemming accessories. Female and Male aluminum couplers welded at each extremity of the aluminum pipe. Possibility to obtain a 30° angle at all levels between two couplers. Mechanical locking with two locking rings. A "O" ring seam compressed in his seating when locking guarantees the water tightness. The direction of water flow in the joining is Male-Female. It exists for this type of couplers a complete range of pressed hot galvanized steel accessories (Tee in line, 45° and 90° Elbows, Cross, End plug, Valve). Tube conformable at standards NF A50801 et A50802. Pipes and accessories tested et CEMAGREF.



The water tight coupler LO-HI

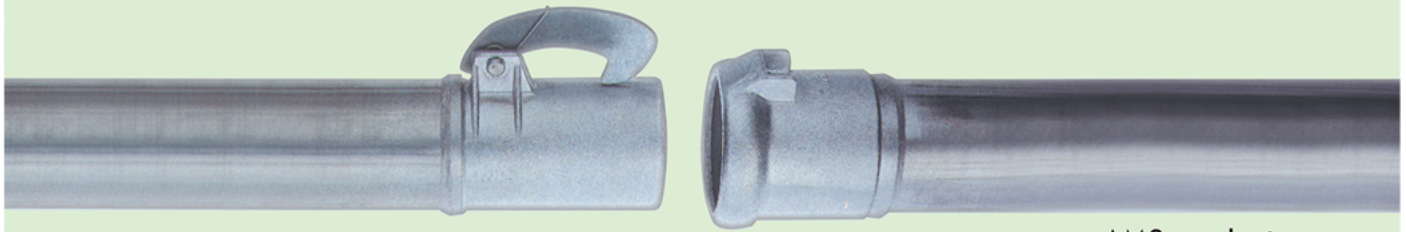
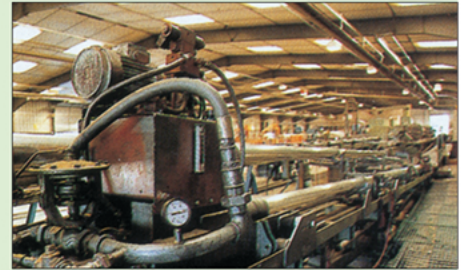
TIGHT PIPES FIXED AT LONG LENGTH BRINGING WATER AT HIGH PRESSURE

Principally used at the departure of the pumping station, the pipes LO-HI can be used also for low-pressure flow (1 bar maximum) without locking ring clamp. Mechanical locking is doing with steel ring clamp at high pressure. Possibility to obtain a 30° angle at all levels between two couplers. Mechanical locking with two locking rings. A double lip hydraulic seam guarantees the water tightness as soon as pressure is on. The direction of the water flow in the joining is Female-Male. It exists for this type of couplers a complete range of pressed hot galvanized steel accessories (Tee in line, 45° and 90° Elbows, Cross, End plug, Valve) Tube conformable at standards NF A50801 et A50802. Pipes and accessories tested et CEMAGREF.



The optimal solution

FITTINGS



AMS product range



Tee Flange hydrant exit Farmland



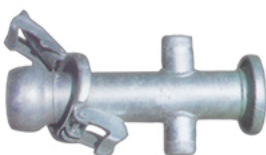
Flange hydrants to be welded



Connection exit Farmland



Elbow ABC



Cross CIA / HR



Tee in line Farmland

AMS Product range

MOVABLE PIPES INTENDED FOR FEEDING REEL MACHINES

Mechanical locking with locking ring fitted with a spring. During pipes joining, look after position the locking rings in the vertical level and not on the side. Males and Females aluminum couplers, welded at each extremity of the aluminum pipe. The water tightness is guaranteed by a double lip hydraulic seam as soon as pressure is on. The direction of water flow in the joining is Female-Male. It exist for this type of couplers a comple range of pressed hot galvanized steel accessories. (Tee in line, 45° and 90° Elbows, Cross, End plug, Valve)
Tube conformable at standards NF A50801 et A50802. Pipes and accessories tested et CEMA-GREF.

Weights of pipes with connection

Ø of pipe	2"		3"		4"			5"			6"	
	6 m	9 m	6 m	9 m	3 m	6 m	9 m	3 m	6 m	9 m	6 m	9 m
ABC	3,1	5,1	-	-	-	-	-	-	-	-	-	-
HR	2,7	5,5	-	6,4	8,7	11,3	9,1	12,8	15,1	-	-	-
LO HI	-	-	-	-	-	-	-	10,1	12,6	13,2	17,3	-
AMS	-	4,0	5,9	-	6,5	9,1	-	8,7	11,2	-	-	-

NEW:

Irrifrance provides a selection of motor pump group, convenient for different irrigation solutions.

For further information, contact the Project Department : +33 (0)4 67 25 79 79.

Pressure (bars)

Ø"	Ø mm	ABC	HR	LO-HI	AMS
2"	50,7	12	16	-	-
3"	76,0	14	16	-	14
4"	101,4	-	14	-	14
5"	127	-	-	18	12
6"	152,4	-	-	18	-

